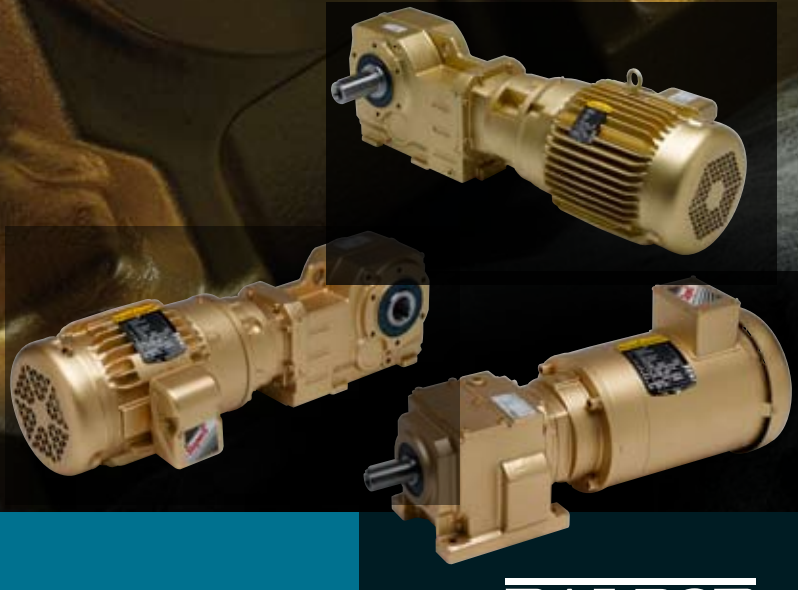


**SAMPER**<sup>®</sup>  
INDUSTRIAL SUPPLIES

**DODGE**<sup>®</sup>

**DODGE<sup>®</sup> QUANTIS<sup>®</sup>  
GOLD GEARMOTORS**

**SUPPLEMENT to the  
DODGE<sup>®</sup> QUANTIS<sup>®</sup>  
GEARING CATALOG**



**BALDOR**  
DODGE

# CONTENTS



## DODGE QUANTIS Gold Gearmotors

Features / Benefits .....	3
How to Order / Nomenclature .....	5
Selection	
ILH .....	6
RHB Solid Output Shaft .....	16
RHB Twin Tapered Bushed. ....	20
Dimensions	
ILH .....	14
RHB Solid Output Shaft .....	18
RHB Twin Tapered Bushed. ....	22
Tie Rod Kit .....	26
Motor Information .....	27
Part Number Index .....	29

ILH

RHB

Motor Information

Part Number Index

# NOTES

---



ILH

RHB

Motor Information

Part Number Index

# FEATURES/BENEFITS



## DODGE QUANTIS In-Line Helical (ILH) and Right Angle Helical Bevel (RHB) C-Face Gearmotors

QUANTIS ILH and RHB c-face gearmotors are now available with Baldor•Reliance Super-E® Premium Efficient motors. Energy Efficiency has now been brought up to the “Gold” standard.



**ILH C-Face Gearmotor**



**RHB C-Face Gearmotor**

### ILH Reducer Specifications:

- Sizes 38 – 88
- NEMA Clamp Collar Design, 56C – 210TC
- Foot Mounted Housing Configuration
- Standard Inch Output Shafts
- Nitrile Input and Output Lip Seals
- A1 Mounting (horizontal, feet down)
- Mobilgear 600 XP 220

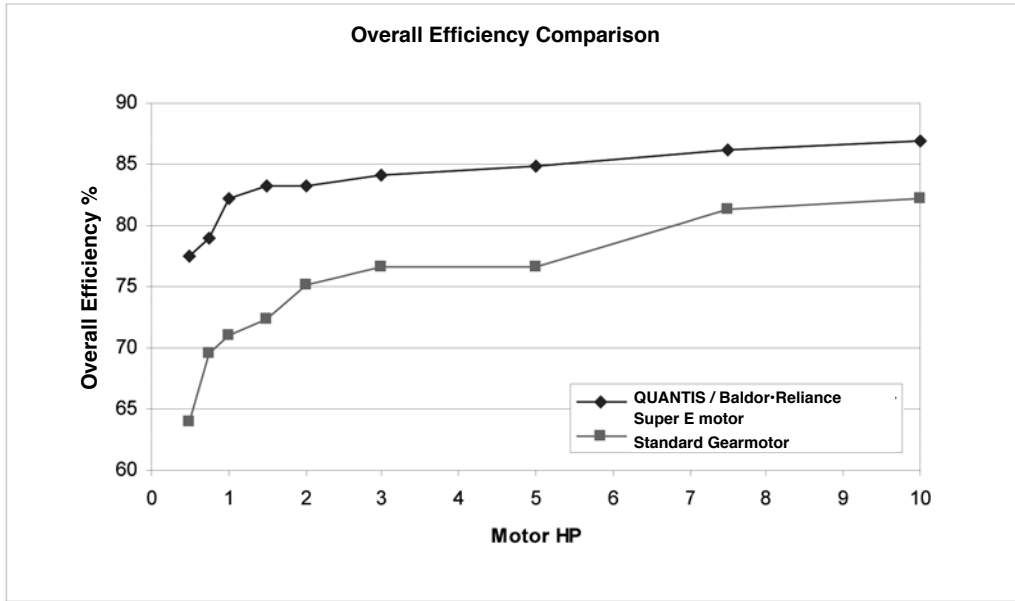
### RHB Reducer Specifications:

- Sizes 38 – 88
- NEMA Clamp Collar Design, 56C – 210TC
- Foot and Flange Mounted Housing Configurations
- Standard Inch Output Shafts (A-side)
- Tapered Hollow Bores with Twin-Tapered Bushings
- Nitrile Input and Output Lip Seals
- A1 Mounting (horizontal, feet down)
- Mobilgear 600 XP 220

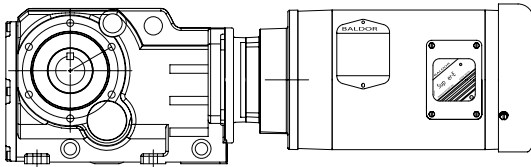
### Baldor•Reliance Super-E Premium Efficient Motor

- 1800 rpm
- 60 Hz, 230/460v
- TEFC Enclosure
- Rolled Steel (1/2 – 5hp) and Cast Iron (7.5 – 10hp) construction that meet or exceed NEMA Premium efficiency levels
- Designed for all standard industrial applications in a dusty, dirty and / or humid environment
- Inverter Capable – Insulation meets NEMA MG1 Part 31.4.4.2
- Suitable for inverter drives for variable torque and 20:1 constant torque applications

## QUANTIS C-Face Reducers with Baldor-Reliance Premium Efficient Super-E Motors

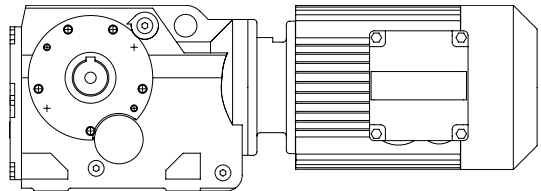


### QUANTIS RHB HELICAL/BEVEL



1 HP Super-E Motor (VEM3546)  
 54.49:1 ratio  
 C-face motor.....87.5% efficient  
 QUANTIS reducer.....94% efficient  
 Total system.....82.25% efficient

### STANDARD GEARMOTOR HELICAL/BEVEL



1 HP Integral motor  
 56.83:1 ratio  
 Integral motor.....75.5% efficient  
 Standard reducer...94% efficient  
 Total system.....70.97% efficient

Yearly savings per unit\* = \$69.20

Savings on typical installation (30 units)\* = \$2,076

Yearly heat load savings per unit\*\* = 1,722,000 BTU

Yearly heat load savings on typical installation (30 units)\*\* = 51,660,000 BTU

\*based on 20 hr/day, 6 days/week, 50 weeks/year, \$0.08 kW/hr

\*\*Amount of heat that does not need to be removed by air conditioning equipment in a controlled ambient facility.

# HOW TO ORDER/ NOMENCLATURE



## QUANTIS ILH and RHB C-Face Gearmotors

### ILH Example: H3C56S00477G-.5G

H	3	C	56	S	00477	G	.5	G
Housing Configuration	Size	Input Type	Frame	Output Type	Ratio	Style	HP	Motor Type
H = ILH Foot Mounted B = RHB Foot Mounted BF = RHB Flange Mounted	3 = 38 4 = 48 6 = 68 8 = 88	C = Clamp Collar	56 = 56C 14 = 140TC 18 = 180TC 21 = 210TC	S = Solid Inch Shaft (RHB – A side) T = Tapered Hollow	000.00	Quantis Gold	.5 = 1/2 Hp .75 = 3/4 HP 1 = 1 Hp 1.5 = 1-1/2 Hp 2 = 2 Hp 3 = 3 Hp 5 = 5 Hp 7.5 = 7-1/2 Hp 10 = 10 Hp	G = Baldor• Reliance Super-E

### RHB Example: B3C14S00565G-2G

B	3	C	14	S	00565	G	2	G
Housing Configuration	Size	Input Type	Frame	Output Type	Ratio	Style	HP	Motor Type
H = ILH Foot Mounted B = RHB Foot Mounted BF = RHB Flange Mounted	3 = 38 4 = 48 6 = 68 8 = 88	C = Clamp Collar	56 = 56C 14 = 140TC 18 = 180TC 21 = 210TC	S = Solid Inch Shaft (RHB – A side) T = Tapered Hollow	000.00	Quantis Gold	.5 = 1/2 Hp .75 = 3/4 HP 1 = 1 Hp 1.5 = 1-1/2 Hp 2 = 2 Hp 3 = 3 Hp 5 = 5 Hp 7.5 = 7-1/2 Hp 10 = 10 Hp	G = Baldor• Reliance Super-E

Note: For Application Selection Guidelines, refer to pages QUANTIS-9 through QUANTIS-15 in the 2003 QUANTIS Gear Engineering Catalog

ILH

RHB

Motor Information

Part Number Index

## ILH Foot Mounted, Clamp Collar C-Face Gearmotors Premium Efficient Motor

RPM Range	Size	Ratio	Output RPM	Mechanical Input HP (Max)				1/2	3/4
				56C	140TC	180TC	210TC	56C	56C
409 - 501 RPM	HB 482	4.28	409		5.01				
	HB 482	4.28	409			10.37			
	HB 682	4.22	415			10.35			
	HB 682	4.22	415				24.96		
	HB 682	3.49	501				26.64		
315 - 367 RPM	HB 382	4.77	367	2.02				H3C56S00477G-.5G	H3C56S00477G-.75G
	HB 382	4.77	367		5.01				
	HB 382	5.55	315		5.00				
	HB 482	5.15	340		5.00				
	HB 382	4.77	367			7.19			
	HB 482	5.15	340			10.35			
	HB 682	5.06	346				23.27		
254 - 295 RPM	HB 382	6.16	284	2.02				H3C56S00616G-.5G	H3C56S00616G-.75G
	HB 382	6.16	284		5.00				
	HB 382	6.71	261		4.99				
	HB 482	6.06	289		5.00				
	HB 382	6.71	261			6.01			
	HB 482	6.06	289			10.36			
	HB 482	6.90	254			10.35			
	HB 682	5.93	295				20.31		
200 - 233 RPM	HB 682	6.72	260				24.68		
	HB 382	7.50	233	2.02				H3C56S00750G-.5G	H3C56S00750G-.75G
	HB 382	7.50	233		4.75				
	HB 382	7.52	233		5.00				
	HB 382	8.75	200		5.00				
	HB 482	8.29	211		5.00				
	HB 382	7.50	233			5.59			
	HB 482	8.29	211			9.80			
	HB 682	8.11	216				22.48		
179 - 189 RPM	HB 382	9.70	180	2.02				H3C56S00970G-.5G	H3C56S00970G-.75G
	HB 382	9.70	180		4.86				
	HB 482	9.76	179		5.00				
	HB 382	9.70	180			4.86			
	HB 482	9.76	179			8.79			
	HB 682	9.73	180				20.17		
	HB 882	9.26	189				28.62		

\* Footed, standard inch shaft diameter, A1 mounting position, clamp collar input, 1750 rpm input speed  
For motor information, please reference page 27.

# SELECTION



## ILH Foot Mounted, Clamp Collar C-Face Gearmotors Premium Efficient Motor

1	1-1/2	2	3	5	7-1/2	10
56C	140TC	140TC	180TC	180TC	210TC	210TC
	H4C14S00428G-1.5G	H4C14S00428G-2G				
			H4C18S00428G-3G	H4C18S00428G-5G		
			H6C18S00422G-3G	H6C18S00422G-5G		
					H6C21S00422G-7.5G	H6C21S00422G-10G
					H6C21S00349G-7.5G	H6C21S00349G-10G
H3C56S00477G-1G						
	H3C14S00477G-1.5G	H3C14S00477G-2G				
	H3C14S00555G-1.5G	H3C14S00555G-2G				
	H4C14S00515G-1.5G	H4C14S00515G-2G				
			H3C18S00477G-3G	H3C18S00477G-5G		
			H4C18S00515G-3G	H4C18S00515G-5G		
					H6C21S00506G-7.5G	H6C21S00506G-10G
H3C56S00616G-1G						
	H3C14S00616G-1.5G	H3C14S00616G-2G				
	H3C14S00671G-1.5G	H3C14S00671G-2G				
	H4C14S00606G-1.5G	H4C14S00606G-2G				
			H3C18S00671G-3G	H3C18S00671G-5G		
			H4C18S00606G-3G	H4C18S00606G-5G		
			H4C18S00690G-3G	H4C18S00690G-5G		
					H6C21S00593G-7.5G	H6C21S00593G-10G
					H6C21S00672G-7.5G	H6C21S00672G-10G
H3C56S00750G-1G						
	H3C14S00750G-1.5G	H3C14S00750G-2G				
	H3C14S00752G-1.5G	H3C14S00752G-2G				
	H3C14S00875G-1.5G	H3C14S00875G-2G				
	H4C14S00829G-1.5G	H4C14S00829G-2G				
			H3C18S00750G-3G	H3C18S00750G-5G		
			H4C18S00829G-3G	H4C18S00829G-5G		
					H6C21S00811G-7.5G	H6C21S00811G-10G
H3C56S00970G-1G						
	H3C14S00970G-1.5G	H3C14S00970G-2G				
	H4C14S00976G-1.5G	H4C14S00976G-2G				
			H3C18S00970G-3G			
			H4C18S00976G-3G	H4C18S00976G-5G		
					H6C21S00973G-7.5G	H6C21S00973G-10G
					H8C21S00926G-7.5G	H8C21S00926G-10G

ILH

RHB

Motor Information

Part Number Index

## ILH Foot Mounted, Clamp Collar C-Face Gearmotors Premium Efficient Motor

RPM Range	Size	Ratio	Output RPM	Mechanical Input HP (Max.)				1/2	3/4
				56C	140TC	180TC	210TC	56C	56C
143 - 166 RPM	HB 382	11.82	148	2.02				H3C56S01182G-.5G	H3C56S01182G-.75G
	HB 482	12.25	143	2.02				H4C56S01225G-.5G	H4C56S01225G-.75G
	HB 382	10.57	166		4.59				
	HB 382	11.82	148		4.26				
	HB 482	10.93	160		5.00				
	HB 482	12.25	143		5.00				
	HB 482	10.93	160			8.15			
	HB 482	12.25	143			7.55			
	HB 682	11.40	154			10.36			
	HB 682	11.40	154				17.25		
HB 882	10.85	161				27.16			
119 - 129 RPM	HB 382	14.18	123	2.02				H3C56S01418G-.5G	H3C56S01418G-.75G
	HB 482	14.68	119	2.02				H4C56S01468G-.5G	H4C56S01468G-.75G
	HB 382	14.18	123		3.77				
	HB 482	14.68	119		5.00				
	HB 382	14.18	123			3.77			
	HB 482	14.68	119			6.68			
	HB 682	13.59	129			10.36			
	HB 682	14.74	119			10.36			
	HB 682	13.59	129				14.47		
	HB 682	14.74	119				13.34		
HB 882	14.63	120				24.09			
100 - 106 RPM	HB 382	17.33	101	1.84				H3C56S01733G-.5G	H3C56S01733G-.75G
	HB 482	17.55	100	2.02				H4C56S01755G-.5G	H4C56S01755G-.75G
	HB 382	17.33	101		3.12				
	HB 482	17.55	100		4.86				
	HB 482	17.55	100			5.91			
	HB 682	16.45	106			9.95			
	HB 682	16.45	106				11.95		
	HB 882	17.27	101				22.29		
81 - 93 RPM	HB 382	19.64	89	1.67				H3C56S01964G-.5G	H3C56S01964G-.75G
	HB 382	21.67	81	1.55				H3C56S02167G-.5G	H3C56S02167G-.75G
	HB 482	20.95	84	1.96				H4C56S02095G-.5G	H4C56S02095G-.75G
	HB 382	19.64	89		2.75				
	HB 382	21.67	81		2.49				
	HB 482	20.95	84		4.44				
	HB 482	20.95	84			5.24			
	HB 682	20.20	87			8.97			
	HB 682	20.20	87				9.73		
	HB 882	18.72	94				21.46		
HB 882	20.81	84				19.84			

\* Footed, standard inch shaft diameter, A1 mounting position, clamp collar input, 1750 rpm input speed  
For motor information, please reference page 27.

# SELECTION



## ILH Foot Mounted, Clamp Collar C-Face Gearmotors Premium Efficient Motor

1	1-1/2	2	3	5	7-1/2	10
56C	140TC	140TC	180TC	180TC	210TC	210TC
H3C56S01182G-1G						
H4C56S01225G-1G						
	H3C14S01057G-1.5G	H3C14S01057G-2G				
	H3C14S01182G-1.5G	H3C14S01182G-2G				
	H4C14S01093G-1.5G	H4C14S01093G-2G				
	H4C14S01225G-1.5G	H4C14S01225G-2G				
			H4C18S01093G-3G	H4C18S01093G-5G		
			H4C18S01225G-3G	H4C18S01225G-5G		
			H6C18S01140G-3G	H6C18S01140G-5G		
					H6C21S01140G-7.5G	H6C21S01140G-10G
					H8C21S01085G-7.5G	H8C21S01085G-10G
H3C56S01418G-1G						
H4C56S01468G-1G						
	H3C14S01418G-1.5G	H3C14S01418G-2G				
	H4C14S01468G-1.5G	H4C14S01468G-2G				
			H3C18S01418G-3G			
			H4C18S01468G-3G	H4C18S01468G-5G		
			H6C18S01359G-3G	H6C18S01359G-5G		
			H6C18S01474G-3G	H6C18S01474G-5G		
					H6C21S01359G-7.5G	H6C21S01359G-10G
					H6C21S01474G-7.5G	H6C21S01474G-10G
					H8C21S01463G-7.5G	H8C21S01463G-10G
H3C56S01733G-1G						
H4C56S01755G-1G						
	H3C14S01733G-1.5G	H3C14S01733G-2G				
	H4C14S01755G-1.5G	H4C14S01755G-2G				
			H4C18S01755G-3G	H4C18S01755G-5G		
			H6C18S01645G-3G	H6C18S01645G-5G		
					H6C21S01645G-7.5G	H6C21S01645G-10G
					H8C21S01727G-7.5G	H8C21S01727G-10G
H3C56S01964G-1G						
H3C56S02167G-1G						
H4C56S02095G-1G						
	H3C14S01964G-1.5G	H3C14S01964G-2G				
	H3C14S02167G-1.5G	H3C14S02167G-2G				
	H4C14S02095G-1.5G	H4C14S02095G-2G				
			H4C18S02095G-3G	H4C18S02095G-5G		
			H6C18S02020G-3G	H6C18S02020G-5G		
					H6C21S02020G-7.5G	
					H8C21S01872G-7.5G	H8C21S01872G-10G
					H8C21S02081G-7.5G	H8C21S02081G-10G

ILH

RHB

Motor Information

Part Number Index

## ILH Foot Mounted, Clamp Collar C-Face Gearmotors Premium Efficient Motor

RPM Range	Size	Ratio	Output RPM	Mechanical Input HP (Max.)				1/2	3/4
				56C	140TC	180TC	210TC	56C	56C
68 - 77 RPM	HB 382	24.50	71	1.41				H3C56S02450G-.5G	H3C56S02450G-.75G
	HB 382	24.50	71		2.21				
	HB 682	25.55	69		4.36				
	HB 682	25.55	69			7.70			
	HB 682	25.55	69				7.70		
	HB 882	22.61	77				18.26		
61 - 66 RPM	HB 382	27.97	63	1.26				H3C56S02797G-.5G	H3C56S02797G-.75G
	HB 482	26.53	66	1.63				H4C56S02653G-.5G	H4C56S02653G-.75G
	HB 482	28.74	61	1.53				H4C56S02874G-.5G	H4C56S02874G-.75G
	HB 382	27.97	63		1.93				
	HB 482	26.53	66		3.92				
	HB 482	28.74	61		3.77				
	HB 482	26.53	66			4.17			
	HB 482	28.74	61			3.85			
	HB 682	28.25	62			6.96			
	HB 882	26.85	65			9.57			
51 - 57 RPM	HB 382	31.80	55	1.13				H3C56S03180G-.5G	H3C56S03180G-.75G
	HB 383	33.82	52	1.60				H3C56S03382G-.5G	H3C56S03382G-.75G
	HB 482	31.77	55	1.40				H4C56S03177G-.5G	H4C56S03177G-.75G
	HB 382	31.80	55		1.70				
	HB 482	31.77	55		3.48				
	HB 682	30.60	57		3.94				
	HB 682	34.49	51		3.69				
	HB 482	31.77	55			3.48			
	HB 682	30.60	57			6.43			
	HB 682	34.49	51			5.70			
	HB 882	31.32	56			8.45			
45 - 49 RPM	HB 382	39.24	45	.95				H3C56S03924G-.5G	H3C56S03924G-.75G
	HB 383	39.28	45	1.38				H3C56S03928G-.5G	H3C56S03928G-.75G
	HB 482	37.06	47	1.23				H4C56S03706G-.5G	H4C56S03706G-.75G
	HB 483	35.59	49		3.11				
	HB 482	37.06	47		2.98				
	HB 682	37.76	46		3.51				
	HB 683	37.80	46			5.20			
	HB 882	37.27	47			7.30			

\* Footed, standard inch shaft diameter, A1 mounting position, clamp collar input, 1750 rpm input speed  
For motor information, please reference page 27.

# SELECTION



## ILH Foot Mounted, Clamp Collar C-Face Gearmotors Premium Efficient Motor

1 56C	1-1/2 140TC	2 140TC	3 180TC	5 180TC	7-1/2 210TC	10 210TC
H3C56S02450G-1G						
	H3C14S02450G-1.5G	H3C14S02450G-2G				
	H6C14S02555G-1.5G	H6C14S02555G-2G				
			H6C18S02555G-3G	H6C18S02555G-5G		
					H6C21S02555G-7.5G	
					H8C21S02261G-7.5G	H8C21S02261G-10G
H3C56S02797G-1G						
H4C56S02653G-1G						
H4C56S02874G-1G						
	H3C14S02797G-1.5G					
	H4C14S02653G-1.5G	H4C14S02653G-2G				
	H4C14S02874G-1.5G	H4C14S02874G-2G				
			H4C18S02653G-3G			
			H4C18S02874G-3G			
			H6C18S02825G-3G	H6C18S02825G-5G		
			H8C18S02685G-3G	H8C18S02685G-5G		
					H8C21S02685G-7.5G	H8C21S02685G-10G
H3C56S03180G-1G						
H3C56S03382G-1G						
H4C56S03177G-1G						
	H3C14S03180G-1.5G					
	H4C14S03177G-1.5G	H4C14S03177G-2G				
	H6C14S03060G-1.5G	H6C14S03060G-2G				
	H6C14S03449G-1.5G	H6C14S03449G-2G				
			H4C18S03177G-3G			
			H6C18S03060G-3G	H6C18S03060G-5G		
			H6C18S03449G-3G	H6C18S03449G-5G		
			H8C18S03132G-3G	H8C18S03132G-5G		
					H8C21S03132G-7.5G	H8C21S03132G-10G
H3C56S03928G-1G						
H4C56S03706G-1G						
	H4C14S03559G-1.5G	H4C14S03559G-2G				
	H4C14S03706G-1.5G	H4C14S03706G-2G				
	H6C14S03776G-1.5G	H6C14S03776G-2G				
			H6C18S03780G-3G	H6C18S03780G-5G		
			H8C18S03727G-3G	H8C18S03727G-5G		

ILH

RHB

Motor Information

Part Number Index

## ILH Foot Mounted, Clamp Collar C-Face Gearmotors Premium Efficient Motor

RPM Range	Size	Ratio	Output RPM	Mechanical Input HP (Max.)				1/2	3/4
				56C	140TC	180TC	210TC	56C	56C
38 - 42 RPM	HB 383	42.53	41	1.27				H3C56S04253G-.5G	H3C56S04253G-.75G
	HB 482	41.26	42	1.12				H4C56S04126G-.5G	H4C56S04126G-.75G
	HB 483	45.91	38	2.02				H4C56S04591G-.5G	H4C56S04591G-.75G
	HB 482	41.26	42		2.68				
	HB 483	41.38	42		2.67				
	HB 483	45.91	38		2.41				
	HB 682	42.06	42		3.29				
	HB 682	42.06	42			4.67			
	HB 683	45.41	39			4.33			
HB 883	41.19	43			10.02				
30 - 36 RPM	HB 383	58.30	30	.93				H3C56S05830G-.5G	H3C56S05830G-.75G
	HB 483	55.92	31	1.98				H4C56S05592G-.5G	H4C56S05592G-.75G
	HB 483	55.92	31		1.98				
	HB 682	48.09	36		3.04				
	HB 683	53.47	33		3.68				
	HB 883	57.93	30			7.13			
23-29 RPM	HB 483	61.14	29	1.81				H4C56S06114G-.5G	H4C56S06114G-.75G
	HB 483	73.99	24	1.49				H4C56S07399G-.5G	H4C56S07399G-.75G
	HB 683	59.91	29		3.28				
	HB 683	73.30	24		2.68				
	HB 883	74.88	23		5.00				
13 - 17 RPM	HB 483	102.52	17	1.08				H4C56S10252G-.5G	H4C56S10252G-.75G
	HB 483	132.34	13	.84				H4C56S13234G-.5G	H4C56S13234G-.75G
	HB 683	126.41	14	1.56				H6C56S12641G-.5G	H6C56S12641G-.75G
	HB 883	129.79	14				3.18		

\* Footed, standard inch shaft diameter, A1 mounting position, clamp collar input, 1750 rpm input speed  
For motor information, please reference page 27.

# SELECTION



## ILH Foot Mounted, Clamp Collar C-Face Gearmotors Premium Efficient Motor

1 56C	1-1/2 140TC	2 140TC	3 180TC	5 180TC	7-1/2 210TC	10 210TC
H3C56S04253G-1G						
H4C56S04126G-1G						
H4C56S04591G-1G						
	H4C14S04126G-1.5G	H4C14S04126G-2G				
	H4C14S04138G-1.5G	H4C14S04138G-2G				
	H4C14S04591G-1.5G	H4C14S04591G-2G				
	H6C14S04206G-1.5G	H6C14S04206G-2G				
			H6C18S04206G-3G			
			H6C18S04541G-3G			
			H8C18S04119G-3G	H8C18S04119G-5G		
H4C56S05592G-1G						
	H4C14S05592G-1.5G					
	H6C14S04809G-1.5G	H6C14S04809G-2G				
	H6C14S05347G-1.5G	H6C14S05347G-2G				
			H8C18S05793G-3G	H8C18S05793G-5G		
H4C56S06114G-1G						
H4C56S07399G-1G						
	H6C14S05991G-1.5G	H6C14S05991G-2G				
	H6C14S07330G-1.5G	H6C14S07330G-2G				
	H8C14S07488G-1.5G	H8C14S07488G-2G				
H4C56S10252G-1G						
H6C56S12641G-1G						
			H8C18S12979G-3G			

ILH

RHB

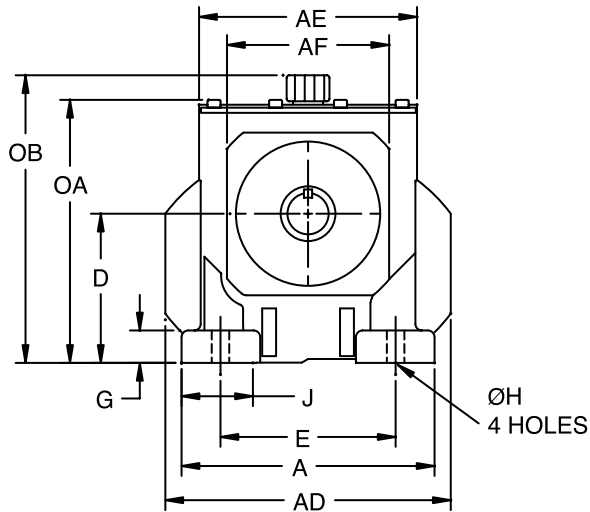
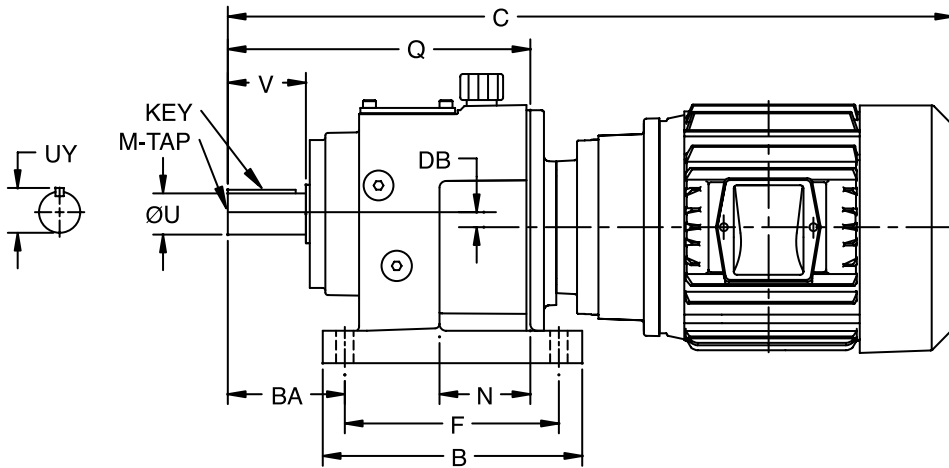
Motor Information

Part Number Index

# DIMENSIONS



## ILH Foot Mounted, Clamp Collar C-Face Gearmotors



ILH

RHB

Motor Information

Part Number Index

# DIMENSIONS



## ILH Foot Mounted, Clamp Collar C-Face Gearmotors

Size	Frame Size	A	B	C *	D	E	F	G	ØH	J	N	Q	V	AD	AE	AF	BA
HB38	56C	5.77	6.30	22.72	3.54	4.33	5.12	0.79	0.39	1.33	2.33	7.48	1.97	6.42	5.07	3.77	2.95
	140TC			24.26													
	180TC			27.11													
HB48	56C	7.68	7.87	24.27	4.53	5.32	6.50	0.98	0.53	2.17	2.76	9.17	2.36	8.66	6.61	4.92	3.54
	140TC			25.82													
	180TC			29.84													
HB68	56C	9.25	9.65	26.30	5.51	6.69	8.07	1.18	0.69	2.36	3.27	11.38	3.15	10.35	8.14	6.32	4.53
	140TC			27.85													
	180TC			32.54													
	210TC			34.32													
HB88	140TC	11.42	12.21	30.54	7.09	8.47	10.24	1.77	0.69	2.95	4.26	14.41	3.94	13.07	10.24	7.87	5.52
	180TC			35.18													
	210TC			36.62													

Size	DB	OA	OB	ØU	UY	KEY	M-TAP
HB38	0	6.21	N/A	1.000	1.11	1/4 x 1/4 x 1-5/8	3/8-16 UNC x 0.87
HB48	0	7.98	8.73	1.250	1.36	1/4 x 1/4 x 2	3/8-16 UNC x 0.87
HB68	0	9.65	10.58	1.625	1.79	3/8 x 3/8 x 2-5/8	5/8-11 UNC x 1.42
HB88	0	12.21	13.17	2.125	2.35	1/2 x 1/2 x 3-1/4	3/4-10 UNC x 1.65

\* Actual C dimension depends on exact motor used.

**RHB Foot Mounted, Clamp Collar C-Face Gearmotors  
Solid Output Shaft  
Premium Efficient Motor**

LH

RHB

Motor Information

Part Number Index

RPM Range	Size	Ratio	Output RPM	Mechanical Input HP (Max)				1/2	3/4
				56C	140TC	180TC	210TC	56C	56C
242 - 316 RPM	BB38	5.65	310	2.02				<b>B3C56S00565G-.5G</b>	<b>B3C56S00565G-.75G</b>
	BB38	5.65	310		5.00				
	BB38	5.65	310			5.60			
	BB48	7.22	242			9.90			
	BB68	6.44	272			10.36			
	BB88	5.54	316				26.94		
97 - 125 RPM	BB38	15.91	110	2.02				<b>B3C56S01591G-.5G</b>	<b>B3C56S01591G-.75G</b>
	BB38	17.99	97		3.41				
	BB48	15.42	114			7.17			
	BB88	14.04	125				24.94		
44 - 63 RPM	BB38	31.59	55	1.94				<b>B3C56S03159G-.5G</b>	<b>B3C56S03159G-.75G</b>
	BB48	28.90	61		3.83				
	BB68	39.39	44		5.01				
	BB68	27.99	63			7.20			
	BB88	28.50	61				14.24		
29 - 34 RPM	BB48	54.49	32	2.02				<b>B4C56S05449G-.5G</b>	<b>B4C56S05449G-.75G</b>
	BB48	60.08	29		1.84				
	BB68	58.23	30		3.46				
	BB88	58.37	30			6.95			
20 - 23 RPM	BB48	83.25	21	1.33				<b>B4C56S08325G-.5G</b>	<b>B4C56S08325G-.75G</b>
	BB68	83.40	21		2.42				
	BB88	84.21	21		4.82				
	BB88	75.45	23			5.38			
	BB88	84.21	21			4.82			
12 - 18 RPM	BB68	99.55	18	1.97				<b>B6C56S09955G-.5G</b>	<b>B6C56S09955G-.75G</b>
	BB68	150.98	12	1.34				<b>B6C56S15098G-.5G</b>	<b>B6C56S15098G-.75G</b>
	BB88	103.38	17		3.92				
	BB88	120.42	15		3.37				
	BB88	144.58	12		2.81				
6 - 9 RPM	BB68	243.72	7	0.83				<b>B6C56S24372G-.5G</b>	<b>B6C56S24372G-.75G</b>
	BB88	193.24	9	1.58				<b>B8C56S19324G-.5G</b>	<b>B8C56S19324G-.75G</b>
	BB88	302.68	6	1.07				<b>B8C56S30268G-.5G</b>	<b>B8C56S30268G-.75G</b>

\* Standard inch shaft diameter, output shaft position A, A1 mounting position, 1750 rpm input speed  
For motor information, please reference page 27.

# SELECTION



## RHB Foot Mounted, Clamp Collar C-Face Gearmotors Solid Output Shaft Premium Efficient Motor

1	1-1/2	2	3	5	7-1/2	10
56C	140TC	140TC	180TC	180TC	210TC	210TC
B3C56S00565G-1G						
	B3C14S00565G-1.5G	B3C14S00565G-2G				
			B3C18S00565G-3G	B3C18S00565G-5G		
			B4C18S00722G-3G	B4C18S00722G-5G		
			B6C18S00644G-3G	B6C18S00644G-5G		
					B8C21S00554G-7.5G	B8C21S00554G-10G
B3C56S01591G-1G						
	B3C14S01799G-1.5G	B3C14S01799G-2G				
			B4C18S01542G-3G	B4C18S01542G-5G		
					B8C21S01404G-7.5G	B8C21S01404G-10G
B3C56S03159G-1G						
	B4C14S02890G-1.5G	B4C14S02890G-2G				
	B6C14S03939G-1.5G	B6C14S03939G-2G				
			B6C18S02799G-3G	B6C18S02799G-5G		
					B8C21S02850G-7.5G	B8C21S02850G-10G
B4C56S05449G-1G						
	B4C14S06008G-1.5G					
	B6C14S05823G-1.5G	B6C14S05823G-2G				
			B8C18S05837G-3G	B8C18S05837G-5G		
B4C56S08325G-1G						
	B6C14S08340G-1.5G	B6C14S08340G-2G				
	B8C14S08421G-1.5G	B8C14S08421G-2G				
			B8C18S07545G-3G	B8C18S07545G-5G		
			B8C18S08421G-3G			
B6C56S09955G-1G						
B6C56S15098G-1G						
	B8C14S10338G-1.5G	B8C14S10338G-2G				
	B8C14S12042G-1.5G	B8C14S12042G-2G				
	B8C14S14458G-1.5G	B8C14S14458G-2G				
B8C56S19324G-1G						
B8C56S30268G-1G						

ILH

RHB

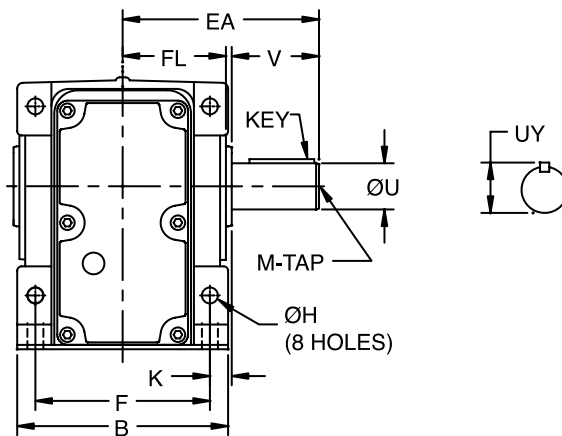
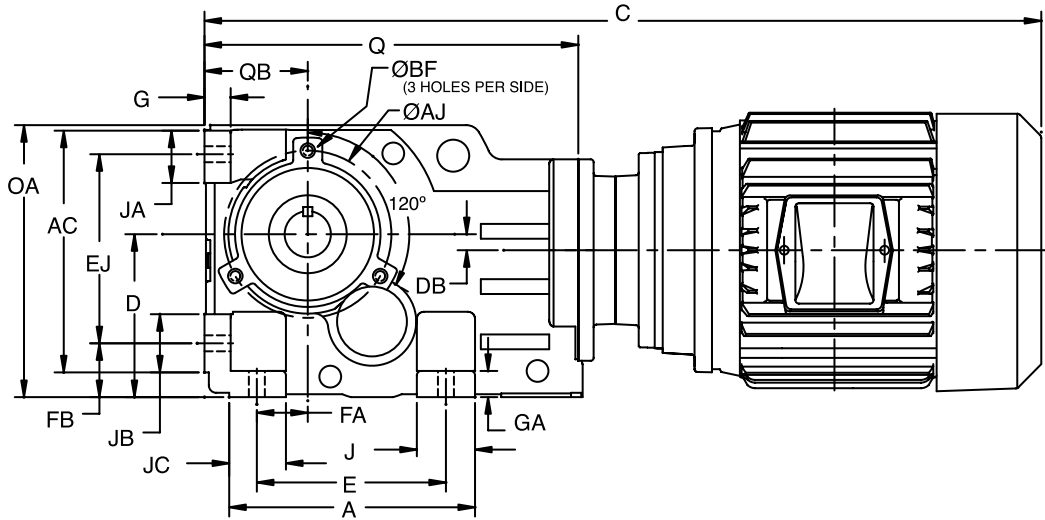
Motor Information

Part Number Index

# DIMENSIONS



## RHB Foot Mounted, Clamp Collar C-Face Gearmotors - Solid Output Shaft



1LH

RHB

Motor Information

Part Number Index

# DIMENSIONS



## RHB Foot Mounted, Clamp Collar C-Face Gearmotors - Solid Output Shaft

Size	Frame Size	A	B	C *	D	E	F	G	ØH	J	K	Q	V	AC	ØAJ	ØBF	DB
BB38	56C	5.55	4.72	23.58	3.94	4.33	3.94	0.63	0.43	1.26	0.39	8.94	1.97	5.79	3.94	M8 x .55 DEEP	0.37
	140TC			25.13													
	180TC			28.57													
BB48	56C	6.65	5.71	24.76	4.41	5.12	4.72	0.71	0.43	1.58	0.59	10.12	2.36	6.54	4.53	M10 x .66 DEEP	0.43
	140TC			26.31													
	180TC			29.75													
BB68	56C	6.69	6.69	26.64	5.51	4.72	5.51	0.87	0.53	1.97	0.79	12.21	3.15	8.19	5.12	M12 x .82 DEEP	0.26
	140TC			28.19													
	180TC			32.88													
BB88	56C	8.07	7.87	28.91	7.09	5.91	6.50	0.98	0.71	2.17	0.89	14.72	3.94	10.31	6.50	M12 x .82 DEEP	0.79
	140TC			30.46													
	180TC			35.08													
	210TC			37.66													

Size	EA	EJ	FA	FB	FL	GA	JA	JB	JC	OA	QB	ØU	UY	KEY	M-TAP
BB38	4.33	4.53	1.10	1.26	2.28	0.63	1.22	1.30	1.38	6.58	2.48	1.000	1.11	1/4 x 1/4 x 1-5/8	3/8-16 UNC x 0.87
BB48	5.31	5.12	1.38	1.46	2.80	0.71	1.42	1.58	1.54	7.36	2.80	1.250	1.37	1/4 x 1/4 x 1-7/8	3/8-16 UNC x 0.87
BB68	6.69	6.30	1.18	1.77	3.39	0.87	1.89	1.97	1.97	9.09	3.54	1.625	1.80	3/8 x 3/8 x 2-5/8	5/8-11 UNC x 1.42
BB88	8.07	7.87	1.58	2.17	3.94	0.98	2.56	2.17	2.17	11.61	4.41	2.000	2.22	1/2 x 1/2 x 3-1/4	5/8-11 UNC x 1.42

\* Actual C dimension depends on exact motor used.

**RHB Flange Mounted, Clamp Collar C-Face Gearmotors  
Twin Tapered Bushed\*\*  
Premium Efficient Motor**

LH

RHB

Motor Information

Part Number Index

RPM Range	Size	Ratio	Output RPM	Mechanical Input HP (Max)				1/2	3/4
				56C	140TC	180TC	210TC	56C	56C
242 - 316 RPM	BF38	5.65	310	2.02				BF3C56T00565G-.5G	BF3C56T00565G-.75G
	BF38	5.65	310		5.00				
	BF38	5.65	310			5.60			
	BF48	7.22	242			9.90			
	BF68	6.44	272			10.36			
	BF88	5.54	316				26.94		
97 - 125 RPM	BF38	15.91	110	2.02				BF3C56T01591G-.5G	BF3C56T01591G-.75G
	BF38	17.99	97		3.41				
	BF48	15.42	114			7.17			
	BF88	14.04	125				24.94		
44 - 63 RPM	BF38	31.59	55	1.94				BF3C56T03159G-.5G	BF3C56T03159G-.75G
	BF48	28.90	61		3.83				
	BF68	39.39	44		5.01				
	BF68	27.99	63			7.20			
	BF88	28.50	61				14.24		
29 - 34 RPM	BF48	54.49	32	2.02				BF4C56T05449G-.5G	BF4C56T05449G-.75G
	BF48	60.08	29		1.84				
	BF68	58.23	30		3.46				
	BF88	58.37	30			6.95			
20 - 23 RPM	BF48	83.25	21	1.33				BF4C56T08325G-.5G	BF4C56T08325G-.75G
	BF68	83.40	21		2.42				
	BF88	84.21	21		4.82				
	BF88	75.45	23			5.38			
	BF88	84.21	21			4.82			
12 - 18 RPM	BF68	99.55	18	1.97				BF6C56T09955G-.5G	BF6C56T09955G-.75G
	BF68	150.98	12	1.34				BF6C56T15098G-.5G	BF6C56T15098G-.75G
	BF88	103.38	17		3.92				
	BF88	120.42	15		3.37				
	BF88	144.58	12		2.81				
6 - 9 RPM	BF68	243.72	7	0.83				BF6C56T24372G-.5G	BF6C56T24372G-.75G
	BF88	193.24	9	1.58				BF8C56T19324G-.5G	BF8C56T19324G-.75G
	BF88	302.68	6	1.07				BF8C56T30268G-.5G	BF8C56T30268G-.75G

\* Twin Tapered hollow output bore, A1 mounting position, 1750 rpm input speed

\*\* Twin Tapered Bushings need to be ordered separately.

For motor information, please reference page 27.

# SELECTION



## RHB Flange Mounted, Clamp Collar C-Face Gearmotors Twin Tapered Bushed\*\* Premium Efficient Motor

1	1-1/2	2	3	5	7-1/2	10
56C	140TC	140TC	180TC	180TC	210TC	210TC
BF3C56T00565G-1G						
	BF3C14T00565G-1.5G	BF3C14T00565G-2G				
			BF3C18T00565G-3G	BF3C18T00565G-5G		
			BF4C18T00722G-3G	BF4C18T00722G-5G		
			BF6C18T00644G-3G	BF6C18T00644G-5G		
					BF8C21T00554G-7.5G	BF8C21T00554G-10G
BF3C56T01591G-1G						
	BF3C14T01799G-1.5G	BF3C14T01799G-2G				
			BF4C18T01542G-3G	BF4C18T01542G-5G		
					BF8C21T01404G-7.5G	BF8C21T01404G-10G
BF3C56T03159G-1G						
	BF4C14T02890G-1.5G	BF4C14T02890G-2G				
	BF6C14T03939G-1.5G	BF6C14T03939G-2G				
			BF6C18T02799G-3G	BF6C18T02799G-5G		
					BF8C21T02850G-7.5G	BF8C21T02850G-10G
BF4C56T05449G-1G						
	BF4C14T06008G-1.5G					
	BF6C14T05823G-1.5G	BF6C14T05823G-2G				
			BF8C18T05837G-3G	BF8C18T05837G-5G		
BF4C56T08325G-1G						
	BF6C14T08340G-1.5G	BF6C14T08340G-2G				
	BF8C14T08421G-1.5G	BF8C14T08421G-2G				
			BF8C18T07545G-3G	BF8C18T07545G-5G		
			BF8C18T08421G-3G			
BF6C56T09955G-1G						
BF6C56T15098G-1G						
	BF8C14T10338G-1.5G	BF8C14T10338G-2G				
	BF8C14T12042G-1.5G	BF8C14T12042G-2G				
	BF8C14T14458G-1.5G	BF8C14T14458G-2G				
BF8C56T19324G-1G						
BF8C56T30268G-1G						

ILH

RHB

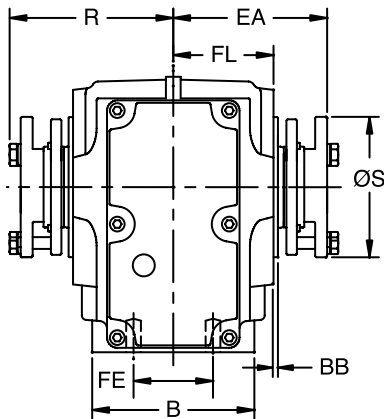
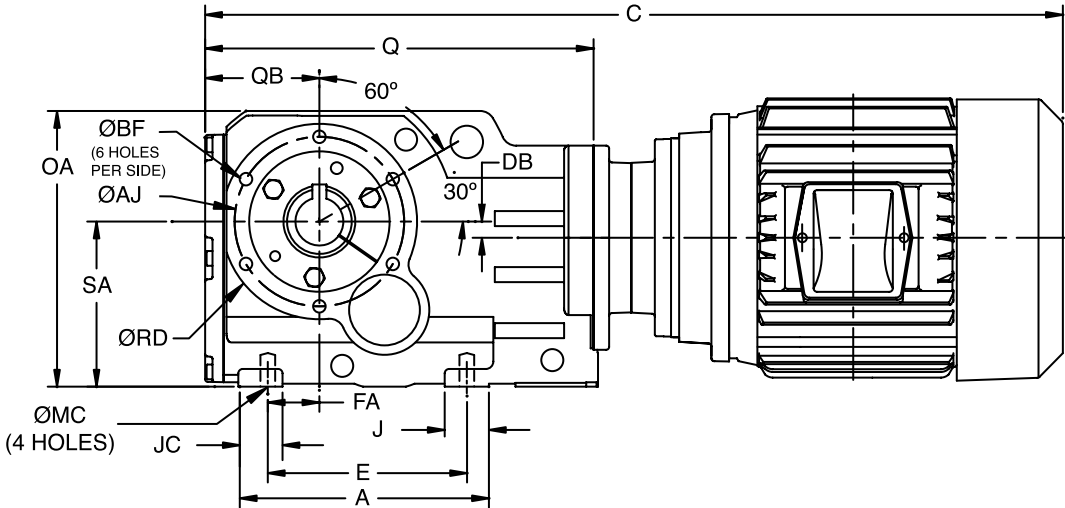
Motor Information

Part Number Index

# DIMENSIONS



## RHB Flange Mounted, Clamp Collar C-Face Gearmotors Twin Tapered Bushed



LH

RHB

Motor Information

Part Number Index

# DIMENSIONS



## RHB Flange Mounted, Clamp Collar C-Face Gearmotors Twin Tapered Bushed

Size	Frame Size	A	B	C *	E	J	Q	R	ØS	ØAJ	BB	ØBF	DB	EA	FA	FE	FL
BF38	56C	5.89	3.94	23.85	4.61	1.29	9.21	3.78	2.91	3.94	0.12	M8 x .55 DEEP	0.37	3.49	1.38	2.36	2.13
	140TC			25.40													
	180TC			28.84													
BF48	56C	6.89	4.33	25.01	5.51	1.18	10.37	4.39	3.75	4.53	0.12	M10 x .66 DEEP	0.43	4.10	1.58	2.76	2.68
	140TC			26.56													
	180TC			30.00													
BF68	56C	7.95	5.51	26.58	5.98	1.97	12.15	5.16	3.96	5.12	0.14	M12 x .82 DEEP	0.26	4.87	1.65	3.46	3.25
	140TC			28.13													
	180TC			32.82													
BF88	56C	8.86	6.69	28.83	6.69	2.17	14.64	5.79	4.88	6.50	0.14	M12 x .82 DEEP	0.79	5.44	1.89	4.53	3.80
	140TC			30.88													
	180TC			35.00													
	210TC			37.58													

Size	JC	ØMC	ØA	ØB	ØRD	SA
BF38	1.26	M10 x .67 DEEP	6.58	2.76	3.15	3.94
BF48	1.18	M10 x .67 DEEP	7.36	3.05	3.74	4.41
BF68	1.97	M12 x .83 DEEP	9.09	3.48	4.33	5.51
BF88	2.17	M16 x 1.02 DEEP	11.61	4.33	5.12	7.09

\* Actual C dimension depends on exact motor used.

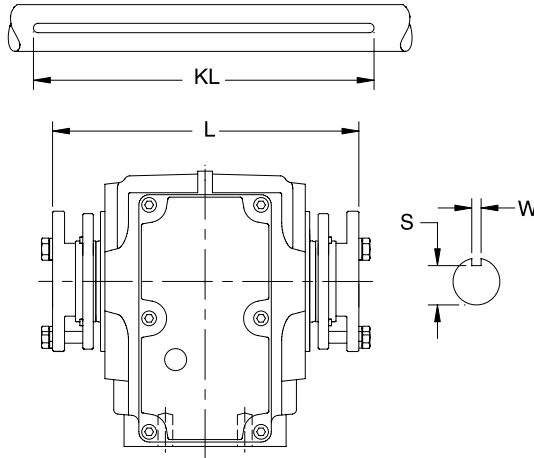
ILH

RHB

Motor Information

Part Number Index

## Twin Tapered Bushings



Size	Bore	Part Number	Type	Weight (lbs)	L	Part Number	Type	Weight (lbs)	L	Shaft Keyseat		
										W	S	KL (3)
RHB 38	1.3750"	<b>093105</b>	Standard (1)	2.0	6.97"	---	---	---	---	0.313	1.201	7.00"
	1.3125"	<b>093106</b>	Standard	2.0		---	---	---	---	0.313	1.137	
	1.2500"	<b>093107</b>	Standard	2.4		---	---	---	---	0.250	1.112	
	1.1875"	<b>093108</b>	Standard	2.0		<b>093115</b>	Short Shaft (2)	2.0	5.15"	0.250	1.049	
	1.1250"	<b>093109</b>	Standard	2.0		<b>093116</b>	Short Shaft	2.0		0.250	0.986	
	1.0000"	<b>093110</b>	Standard	2.0		<b>093117</b>	Short Shaft	2.0		0.250	0.859	
	35 MM	<b>093111</b>	Standard	2.0		---	---	---		10 mm	30 mm	
	32 MM	<b>093112</b>	Standard	2.0		---	---	---	10 mm	27 mm		
	30 MM	<b>093113</b>	Standard	2.0		<b>093118</b>	Short Shaft	2.0	5.15"	8 mm	26 mm	
	25 MM	<b>093114</b>	Standard	2.0		<b>093119</b>	Short Shaft	2.0		8 mm	21 mm	
	RHB 48	1.5000"	<b>092593</b>	Standard (1)		3.3	8.18"	---	---	---	---	
1.4375"		<b>092594</b>	Standard	3.6	<b>092607</b>	Short Shaft (2)		3.7	5.66"	0.375"	1.225"	
1.3750"		<b>092595</b>	Standard	3.5	<b>092608</b>	Short Shaft		4.1		0.3125"	1.201"	
1.3125"		<b>092596</b>	Standard	3.8	<b>092609</b>	Short Shaft		4.0		0.3125"	1.137"	
1.2500"		<b>092597</b>	Standard	3.7	<b>092610</b>	Short Shaft		4.1		0.25"	1.112"	
1.1875"		<b>092598</b>	Standard	3.8	<b>092611</b>	Short Shaft		4.2		0.25"	1.049"	
1.1250"		<b>092599</b>	Standard	4.0	<b>092612</b>	Short Shaft		4.4		0.25"	0.986"	
1.0625"		<b>092600</b>	Standard	4.0	<b>092613</b>	Short Shaft		4.5		0.25"	0.923"	
1.0000"		<b>092601</b>	Standard	4.2	<b>092614</b>	Short Shaft		4.7		0.25"	0.859"	
40 MM		<b>092602</b>	Standard	3.3	---	---		---		12 mm	35 mm	
38 MM		<b>092603</b>	Standard	3.3	---	---		---		12 mm	33 mm	
35 MM		<b>092604</b>	Standard	3.6	<b>092615</b>	Short Shaft		3.9	5.66"	10 mm	30 mm	
32 MM		<b>092605</b>	Standard	3.8	<b>092616</b>	Short Shaft		4.2		10 mm	27 mm	
30 MM		<b>092606</b>	Standard	3.8	<b>092617</b>	Short Shaft		4.3		8 mm	26 mm	

- (1) - Standard Shaft Bushing Kit includes two standard bushings with back-up plates and snap rings; hardware, and key.
- (2) - Short Shaft Bushing Kit includes one standard bushing, one long bushing with insertable wedge; two back-up plates with snap rings; hardware and key. This is an optional bushing for after market short shaft mounting.
- (3) - Standard key provided for Short Shaft Kit. Key will overhang customer shaft within bore.
- (---) - Bore Size not available.

## Twin Tapered Bushings

Size	Bore	Part Number	Type	Weight (lbs)	L	Part Number	Type	Weight (lbs)	L	Shaft Keyseat				
										W	S	KL (3)		
RHB 68	1.8750"	<b>093121</b>	Standard (1)	5.0	9.73"	---	---	---	---	0.500"	1.591"	9.75"		
	1.7500"	<b>093122</b>	Standard	5.0		---	---	---	---	0.375"	1.542"			
	1.6875"	<b>093123</b>	Standard	5.0		---	---	---	---	0.375"	1.479"			
	1.6250"	<b>093124</b>	Standard	5.0		---	---	---	---	0.375"	1.416"			
	1.5000"	<b>093125</b>	Standard	5.0		<b>093132</b>	Short Shaft (2)	5.0	7.25"	0.375"	1.289"			
	1.4375"	<b>093126</b>	Standard	5.0		<b>093133</b>	Short Shaft	5.0		0.375"	1.225"			
	1.3750"	<b>093127</b>	Standard	5.0		<b>093134</b>	Short Shaft	5.0		0.3125"	1.201"			
	1.3125"	<b>093128</b>	Standard	5.0		<b>093135</b>	Short Shaft	5.0		0.3125"	1.137"			
	1.2500"	<b>093129</b>	Standard	5.0		<b>093136</b>	Short Shaft	5.0		0.25"	1.112"			
	1.1875"	<b>093130</b>	Standard	5.0		<b>093137</b>	Short Shaft	5.0		0.25"	1.049"			
	1.1250"	<b>093131</b>	Standard	5.0		<b>093138</b>	Short Shaft	5.0		0.25"	0.986"			
	45 MM	<b>093139</b>	Standard	5.0		---	---	---		---	14 mm		39.5 mm	
	42 MM	<b>093140</b>	Standard	5.0		---	---	---		---	12 mm		37 mm	
	40 MM	<b>093141</b>	Standard	5.0		<b>093146</b>	Short Shaft	5.0		7.25"	12 mm		35 mm	
	38 MM	<b>093142</b>	Standard	5.0		<b>093147</b>	Short Shaft	5.0			12 mm		33 mm	
	35 MM	<b>093143</b>	Standard	5.0		<b>093148</b>	Short Shaft	5.0			10 mm		30 mm	
	32 MM	<b>093144</b>	Standard	5.0		<b>093149</b>	Short Shaft	5.0			10 mm		27 mm	
	30 MM	<b>093145</b>	Standard	5.0		<b>093150</b>	Short Shaft	5.0			8 mm		26 mm	
RHB 88	2.3750"	<b>092619</b>	Standard (1)	6.1	10.88"	---	---	---			---	0.625"	2.021"	11.25"
	2.2500"	<b>092620</b>	Standard	6.2		---	---	---			---	0.500"	1.893"	
	2.1875"	<b>092621</b>	Standard	6.8		<b>092631</b>	Short Shaft (2)	7.0			7.54"	0.500"	1.909"	
	2.1250"	<b>092622</b>	Standard	7.0		<b>092632</b>	Short Shaft	7.4				0.500"	1.845"	
	2.0000"	<b>092623</b>	Standard	7.5		<b>092633</b>	Short Shaft	8.0	0.500"			1.718"		
	1.9375"	<b>092624</b>	Standard	7.8		<b>092634</b>	Short Shaft	8.4	0.500"			1.655"		
	1.8750"	<b>092625</b>	Standard	8.0		<b>092635</b>	Short Shaft	8.7	0.500"			1.591"		
	1.7500"	<b>092626</b>	Standard	8.0		<b>092636</b>	Short Shaft	9.0	0.375"			1.542"		
	1.6875"	<b>092627</b>	Standard	8.2		<b>092637</b>	Short Shaft	9.3	0.375"			1.479"		
	1.6250"	<b>092628</b>	Standard	8.4		<b>092638</b>	Short Shaft	9.6	0.375"			1.416"		
	1.5000"	<b>092629</b>	Standard	8.8		<b>092639</b>	Short Shaft	9.9	0.375"			1.289"		
	1.4375"	<b>092630</b>	Standard	8.8		<b>092640</b>	Short Shaft	10.0	0.375"			1.225"		
	60 MM	<b>092641</b>	Standard	6.2		---	---	---	---			18 mm	53 mm	
	55 MM	<b>092642</b>	Standard	6.8		<b>092649</b>	Short Shaft	7.1	7.54"	16 mm		49 mm		
	50 MM	<b>092643</b>	Standard	7.5		<b>092650</b>	Short Shaft	8.1		14 mm		44.5 mm		
	45 MM	<b>092644</b>	Standard	8.1		<b>092651</b>	Short Shaft	9.0		14 mm		39.5 mm		
	42 MM	<b>092645</b>	Standard	8.4		<b>092652</b>	Short Shaft	9.5		12 mm		37 mm		
	40 MM	<b>092646</b>	Standard	8.6		<b>092653</b>	Short Shaft	9.8		12 mm		35 mm		
38 MM	<b>092647</b>	Standard	8.8	<b>092654</b>	Short Shaft	10.1	12 mm	33 mm						
35 MM	<b>092648</b>	Standard	9.0	<b>092655</b>	Short Shaft	10.6	10 mm	30 mm						

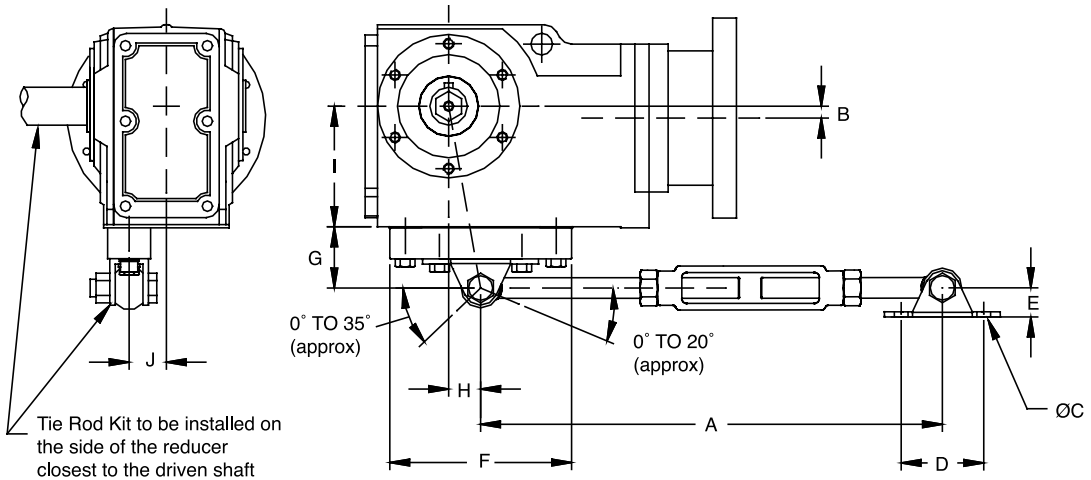
- (1) - Standard Shaft Bushing Kit includes two standard bushings with back-up plates and snap rings; hardware, and key.
- (2) - Short Shaft Bushing Kit includes one standard bushing, one long bushing with insertable wedge; two back-up plates with snap rings; hardware and key. This is an optional bushing for after market short shaft mounting.
- (3) - Standard key provided for Short Shaft Kit. Key will overhang customer shaft within bore.
- (---) - Bore Size not available.

## DODGE QUANTIS Tie Rod Kit Dimensions

### RHB Tie Rod Kit Dimensions – Flange Mounted (B5 / B14)

Tie Rod Kits are available for restraining Hollow Shaft Reducers with the flanged housing. Each kit includes the mounting block, tie rods, turnbuckle, fulcrum, and the mounting hardware.

**Note:** Tie rods should be used in tension, not compression, to achieve the rated performance.



Size	Part Number	A (min-max)	B	ØC	D	E	F	G	H	I	J
BF38	094371	27.00 - 33.00	0.37	0.45	3	1.06	5.75	2.31	0.93	3.94	1.18
BF48	094201	27.00 - 33.00	0.43	0.45	3	1.06	6.63	2.19	1.18	4.41	1.38
BF68	094202	27.00 - 33.00	0.26	0.45	3	1.06	7.75	2.06	1.34	5.51	1.73
BF88	094372	29.00 - 35.00	0.79	0.52	4	1.75	8.75	2.88	1.46	7.09	2.27
BF108	094373	29.50 - 35.50	0.51	0.69	4.75	2	11.5	3.13	1.87	8.35	3.05
BF128	094374	30.00 - 36.00	0.79	0.81	7.03	3.13	12.75	5.13	1.61	10.43	3.84
BF148	094375	30.00 - 36.00	1.46	0.81	7.03	3.13	14.88	4.63	1.77	12.4	4.14
BF168	094376	30.50 - 36.75	1.97	1.13	8.47	3.38	18	6.38	2.36	14.76	4.73

\* Overall length can be reduced further (approximately 6 inches) by cutting the excess threaded rod from the tie rods.

# MOTOR INFORMATION



## QUANTIS ILH and RHB C-Face Gearmotors

### Baldor PREMIUM Efficient Super-E Motor Information

HP	Synchronous RPM	Voltage	Frame	Enclosure	Construction	Part Number
1/2	1800	208-230/460	56C	TEFC	Rolled Steel	<b>VEM3538</b>
3/4	1800	208-230/460	56C	TEFC	Rolled Steel	<b>VEM3542</b>
1	1800	208-230/460	56C	TEFC	Rolled Steel	<b>VEM3546</b>
1-1/2	1800	208-230/460	145TC	TEFC	Rolled Steel	<b>VEM3554T</b>
2	1800	208-230/460	145TC	TEFC	Rolled Steel	<b>VEM3558T</b>
3	1800	208-230/460	182TC	TEFC	Rolled Steel	<b>VEM3611T</b>
5	1800	230/460	184TC	TEFC	Rolled Steel	<b>VEM3615T</b>
7-1/2	1800	230/460	213TC	TEFC	Cast Iron	<b>VEM3770T</b>
10	1800	230/460	215TC	TEFC	Cast Iron	<b>VEM3774T</b>

ILH

RHB

Motor Information

Part Number Index

# NOTE

---



ILH

RHB

Motor Information

Part Number Index

# PART NUMBER INDEX



Part No.	Page	Part No.	Page	Part No.	Page	Part No.	Page
092593	24	092642	25	093140	25	B6C14S03939G-2G	17
092594	24	092643	25	093141	25	B6C14S05823G-1.5G	17
092595	24	092644	25	093142	25	B6C14S05823G-2G	17
092596	24	092645	25	093143	25	B6C14S08340G-1.5G	17
092597	24	092646	25	093144	25	B6C14S08340G-2G	17
092598	24	092647	25	093145	25	B6C18S00644G-3G	17
092599	24	092648	25	093146	25	B6C18S00644G-5G	17
092600	24	092649	25	093147	25	B6C18S02799G-3G	17
092601	24	092650	25	093148	25	B6C18S02799G-5G	17
092602	24	092651	25	093149	25	B6C56S09955G-.5G	16
092603	24	092652	25	093150	25	B6C56S09955G-.75G	16
092604	24	092653	25	094201	26	B6C56S09955G-1G	17
092605	24	092654	25	094202	26	B6C56S15098G-.5G	16
092606	24	092655	25	094371	26	B6C56S15098G-.75G	16
092607	24	093105	24	094372	26	B6C56S15098G-1G	17
092608	24	093106	24	094373	26	B6C56S24372G-.5G	16
092609	24	093107	24	094374	26	B6C56S24372G-.75G	16
092610	24	093108	24	094375	26	B8C14S08421G-1.5G	17
092611	24	093109	24	094376	26	B8C14S08421G-2G	17
092612	24	093110	24	B3C14S00565G-1.5G	17	B8C14S10338G-1.5G	17
092613	24	093111	24	B3C14S00565G-2G	17	B8C14S10338G-2G	17
092614	24	093112	24	B3C14S01799G-1.5G	17	B8C14S12042G-1.5G	17
092615	24	093113	24	B3C14S01799G-2G	17	B8C14S12042G-2G	17
092616	24	093114	24	B3C18S00565G-3G	17	B8C14S14458G-1.5G	17
092617	24	093115	24	B3C18S00565G-5G	17	B8C14S14458G-2G	17
092619	25	093116	24	B3C56S00565G-.5G	16	B8C18S05837G-3G	17
092620	25	093117	24	B3C56S00565G-.75G	16	B8C18S05837G-5G	17
092621	25	093118	24	B3C56S00565G-1G	17	B8C18S07545G-3G	17
092622	25	093119	24	B3C56S01591G-.5G	16	B8C18S07545G-5G	17
092623	25	093121	25	B3C56S01591G-.75G	16	B8C18S08421G-3G	17
092624	25	093122	25	B3C56S01591G-1G	17	B8C21S00554G-10G	17
092625	25	093123	25	B3C56S03159G-.5G	16	B8C21S00554G-7.5G	17
092626	25	093124	25	B3C56S03159G-.75G	16	B8C21S01404G-10G	17
092627	25	093125	25	B3C56S03159G-1G	17	B8C21S01404G-7.5G	17
092628	25	093126	25	B4C14S02890G-1.5G	17	B8C21S02850G-10G	17
092629	25	093127	25	B4C14S02890G-2G	17	B8C21S02850G-7.5G	17
092630	25	093128	25	B4C14S06008G-1.5G	17	B8C56S19324G-.5G	16
092631	25	093129	25	B4C18S00722G-3G	17	B8C56S19324G-.75G	16
092632	25	093130	25	B4C18S00722G-5G	17	B8C56S19324G-1G	17
092633	25	093131	25	B4C18S01542G-3G	17	B8C56S30268G-.5G	16
092634	25	093132	25	B4C18S01542G-5G	17	B8C56S30268G-.75G	16
092635	25	093133	25	B4C56S05449G-.5G	16	B8C56S30268G-1G	17
092636	25	093134	25	B4C56S05449G-.75G	16	BF3C14T00565G-1.5G	21
092637	25	093135	25	B4C56S05449G-1G	17	BF3C14T00565G-2G	21
092638	25	093136	25	B4C56S08325G-.5G	16	BF3C14T01799G-1.5G	21
092639	25	093137	25	B4C56S08325G-.75G	16	BF3C14T01799G-2G	21
092640	25	093138	25	B4C56S08325G-1G	17	BF3C18T00565G-3G	21
092641	25	093139	25	B6C14S03939G-1.5G	17	BF3C18T00565G-5G	21

ILH

RHB

Motor Information

Part Number Index

# PART NUMBER INDEX



ILH

RHB

Motor Information

Part Number Index

Part No.	Page	Part No.	Page	Part No.	Page	Part No.	Page
BF8C18T05837G-3G	21	BF3C56T00565G-.5G	20	H3C14S03180G-1.5G	11	H3C56S03924G-.5G	10
BF8C18T05837G-5G	21	BF3C56T00565G-.75G	20	H3C18S00477G-3G	7	H3C56S03924G-.75G	10
BF8C18T07545G-3G	21	BF3C56T00565G-1G	21	H3C18S00477G-5G	7	H3C56S03928G-.5G	10
BF8C18T07545G-5G	21	BF3C56T01591G-.5G	20	H3C18S00671G-3G	7	H3C56S03928G-.75G	10
BF8C18T08421G-3G	21	BF3C56T01591G-.75G	20	H3C18S00671G-5G	7	H3C56S03928G-1G	11
BF8C21T00554G-10G	21	BF3C56T01591G-1G	21	H3C18S00750G-3G	7	H3C56S04253G-.5G	12
BF8C21T00554G-.75G	21	BF3C56T03159G-.5G	20	H3C18S00750G-5G	7	H3C56S04253G-.75G	12
BF8C21T01404G-10G	21	BF3C56T03159G-.75G	20	H3C18S00970G-3G	7	H3C56S04253G-1G	13
BF8C21T01404G-.75G	21	BF3C56T03159G-1G	21	H3C18S01418G-3G	9	H3C56S05830G-.5G	12
BF8C21T02850G-10G	21	BF4C14T02890G-1.5G	21	H3C56S00477G-.5G	6	H3C56S05830G-.75G	12
BF8C21T02850G-.75G	21	BF4C14T02890G-2G	21	H3C56S00477G-.75G	6	H4C14S00428G-1.5G	7
BF8C56T19324G-.5G	20	BF4C14T06008G-1.5G	21	H3C56S00477G-1G	7	H4C14S00428G-2G	7
BF8C56T19324G-.75G	20	BF4C18T00722G-3G	21	H3C56S00616G-.5G	6	H4C14S00515G-1.5G	7
BF8C56T19324G-1G	21	BF4C18T00722G-5G	21	H3C56S00616G-.75G	6	H4C14S00515G-2G	7
BF8C56T30268G-.5G	20	BF4C18T01542G-3G	21	H3C56S00616G-1G	7	H4C14S00606G-1.5G	7
BF8C56T30268G-.75G	20	BF4C18T01542G-5G	21	H3C56S00750G-.5G	6	H4C14S00606G-2G	7
BF8C56T30268G-1G	21	BF4C56T05449G-.5G	20	H3C56S00750G-.75G	6	H4C14S00829G-1.5G	7
H3C14S00477G-1.5G	7	BF4C56T05449G-.75G	20	H3C56S00750G-1G	7	H4C14S00829G-2G	7
H3C14S00477G-2G	7	BF4C56T05449G-1G	21	H3C56S00970G-.5G	6	H4C14S00976G-1.5G	7
H3C14S00555G-1.5G	7	BF4C56T08325G-.5G	20	H3C56S00970G-.75G	6	H4C14S00976G-2G	7
H3C14S00555G-2G	7	BF4C56T08325G-.75G	20	H3C56S00970G-1G	7	H4C14S01093G-1.5G	9
H3C14S00616G-1.5G	7	BF4C56T08325G-1G	21	H3C56S01182G-.5G	8	H4C14S01093G-2G	9
H3C14S00616G-2G	7	BF6C14T03939G-1.5G	21	H3C56S01182G-.75G	8	H4C14S01225G-1.5G	9
H3C14S00671G-1.5G	7	BF6C14T03939G-2G	21	H3C56S01182G-1G	9	H4C14S01225G-2G	9
H3C14S00671G-2G	7	BF6C14T05823G-1.5G	21	H3C56S01418G-.5G	8	H4C14S01468G-1.5G	9
H3C14S00750G-1.5G	7	BF6C14T05823G-2G	21	H3C56S01418G-.75G	8	H4C14S01468G-2G	9
H3C14S00750G-2G	7	BF6C14T08340G-1.5G	21	H3C56S01418G-1G	9	H4C14S01755G-1.5G	9
H3C14S00752G-1.5G	7	BF6C14T08340G-2G	21	H3C56S01733G-.5G	8	H4C14S01755G-2G	9
H3C14S00752G-2G	7	BF6C18T00644G-3G	21	H3C56S01733G-.75G	8	H4C14S02095G-1.5G	9
H3C14S00875G-1.5G	7	BF6C18T00644G-5G	21	H3C56S01733G-1G	9	H4C14S02095G-2G	9
H3C14S00875G-2G	7	BF6C18T02799G-3G	21	H3C56S01964G-.5G	8	H4C14S02653G-1.5G	11
H3C14S00970G-1.5G	7	BF6C18T02799G-5G	21	H3C56S01964G-.75G	8	H4C14S02653G-2G	11
H3C14S00970G-2G	7	BF6C56T09955G-.5G	20	H3C56S01964G-1G	9	H4C14S02874G-1.5G	11
H3C14S01057G-1.5G	9	BF6C56T09955G-.75G	20	H3C56S02167G-.5G	8	H4C14S02874G-2G	11
H3C14S01057G-2G	9	BF6C56T09955G-1G	21	H3C56S02167G-.75G	8	H4C14S03177G-1.5G	11
H3C14S01182G-1.5G	9	BF6C56T15098G-.5G	20	H3C56S02167G-1G	9	H4C14S03177G-2G	11
H3C14S01182G-2G	9	BF6C56T15098G-.75G	20	H3C56S02450G-.5G	10	H4C14S03559G-1.5G	11
H3C14S01418G-1.5G	9	BF6C56T15098G-1G	21	H3C56S02450G-.75G	10	H4C14S03559G-2G	11
H3C14S01418G-2G	9	BF6C56T24372G-.5G	20	H3C56S02450G-1G	11	H4C14S03706G-1.5G	11
H3C14S01733G-1.5G	9	BF6C56T24372G-.75G	20	H3C56S02797G-.5G	10	H4C14S03706G-2G	11
H3C14S01733G-2G	9	BF8C14T08421G-1.5G	21	H3C56S02797G-.75G	10	H4C14S04126G-1.5G	13
H3C14S01964G-1.5G	9	BF8C14T08421G-2G	21	H3C56S02797G-1G	11	H4C14S04126G-2G	13
H3C14S01964G-2G	9	BF8C14T10338G-1.5G	21	H3C56S03180G-.5G	10	H4C14S04138G-1.5G	13
H3C14S02167G-1.5G	9	BF8C14T10338G-2G	21	H3C56S03180G-.75G	10	H4C14S04138G-2G	13
H3C14S02167G-2G	9	BF8C14T12042G-1.5G	21	H3C56S03180G-1G	11	H4C14S04591G-1.5G	13
H3C14S02450G-1.5G	11	BF8C14T12042G-2G	21	H3C56S03382G-.5G	10	H4C14S04591G-2G	13
H3C14S02450G-2G	11	BF8C14T14458G-1.5G	21	H3C56S03382G-.75G	10	H4C14S05592G-1.5G	13
H3C14S02797G-1.5G	11	BF8C14T14458G-2G	21	H3C56S03382G-1G	11	H4C18S00428G-3G	7

# PART NUMBER INDEX



Part No.	Page	Part No.	Page	Part No.	Page	Part No.	Page
H4C18S00428G-5G	7	H4C56S04126G-.5G	12	H6C18S02020G-5G	9	H8C18S04119G-5G	13
H4C18S00515G-3G	7	H4C56S04126G-.75G	12	H6C18S02555G-3G	11	H8C18S05793G-3G	13
H4C18S00515G-5G	7	H4C56S04126G-1G	13	H6C18S02825G-3G	11	H8C18S12979G-3G	13
H4C18S00606G-3G	7	H4C56S04591G-.5G	12	H6C18S02825G-5G	11	H8C21S00926G-10G	7
H4C18S00606G-5G	7	H4C56S04591G-.75G	12	H6C18S03060G-3G	11	H8C21S00926G-7.5G	7
H4C18S00690G-3G	7	H4C56S04591G-1G	13	H6C18S03060G-5G	11	H8C21S01085G-10G	9
H4C18S00690G-5G	7	H4C56S05592G-.5G	12	H6C18S03449G-3G	11	H8C21S01085G-7.5G	9
H4C18S00829G-3G	7	H4C56S05592G-.75G	12	H6C18S03449G-5G	11	H8C21S01463G-10G	9
H4C18S00829G-5G	7	H4C56S05592G-1G	13	H6C18S03780G-3G	11	H8C21S01463G-7.5G	9
H4C18S00976G-3G	7	H4C56S06114G-.5G	12	H6C18S03780G-5G	11	H8C21S01727G-10G	9
H4C18S00976G-5G	7	H4C56S06114G-.75G	12	H6C18S04206G-3G	13	H8C21S01727G-7.5G	9
H4C18S01093G-3G	9	H4C56S06114G-1G	13	H6C18S04541G-3G	13	H8C21S01872G-10G	9
H4C18S01093G-5G	9	H4C56S07399G-.5G	12	H6C21S00349G-10G	7	H8C21S01872G-7.5G	9
H4C18S01225G-3G	9	H4C56S07399G-.75G	12	H6C21S00349G-7.5G	7	H8C21S02081G-10G	9
H4C18S01225G-5G	9	H4C56S07399G-1G	13	H6C21S00422G-10G	7	H8C21S02081G-7.5G	9
H4C18S01468G-3G	9	H4C56S10252G-.5G	12	H6C21S00422G-7.5G	7	H8C21S02261G-10G	11
H4C18S01468G-5G	9	H4C56S10252G-.75G	12	H6C21S00506G-10G	7	H8C21S02261G-7.5G	11
H4C18S01755G-3G	9	H4C56S10252G-1G	13	H6C21S00506G-7.5G	7	H8C21S02685G-10G	11
H4C18S01755G-5G	9	H4C56S13234G-.5G	12	H6C21S00593G-10G	7	H8C21S02685G-7.5G	11
H4C18S02095G-3G	9	H4C56S13234G-.75G	12	H6C21S00593G-7.5G	7	H8C21S03132G-10G	11
H4C18S02095G-5G	9	H4C14S02555G-1.5G	11	H6C21S00672G-10G	7	H8C21S03132G-7.5G	11
H4C18S02653G-3G	11	H6C14S02555G-2G	11	H6C21S00672G-7.5G	7	VEM3538	27
H4C18S02874G-3G	11	H6C14S03060G-1.5G	11	H6C21S00811G-10G	7	VEM3542	27
H4C18S03177G-3G	11	H6C14S03060G-2G	11	H6C21S00811G-7.5G	7	VEM3546	27
H4C56S01225G-.5G	8	H6C14S03449G-1.5G	11	H6C21S00973G-10G	7	VEM3554T	27
H4C56S01225G-.75G	8	H6C14S03449G-2G	11	H6C21S00973G-7.5G	7	VEM3558T	27
H4C56S01225G-1G	9	H6C14S03776G-1.5G	11	H6C21S01140G-10G	9	VEM3611T	27
H4C56S01468G-.5G	8	H6C14S04206G-1.5G	13	H6C21S01140G-7.5G	9	VEM3615T	27
H4C56S01468G-.75G	8	H6C14S04206G-2G	13	H6C21S01359G-10G	9	VEM3770T	27
H4C56S01468G-1G	9	H6C14S04809G-1.5G	13	H6C21S01359G-7.5G	9	VEM3774T	27
H4C56S01755G-.5G	8	H6C14S04809G-2G	13	H6C21S01474G-10G	9		
H4C56S01755G-.75G	8	H6C14S05347G-1.5G	13	H6C21S01474G-7.5G	9		
H4C56S01755G-1G	9	H6C14S05347G-2G	13	H6C21S01645G-10G	9		
H4C56S02095G-.5G	8	H6C14S05991G-1.5G	13	H6C21S01645G-7.5G	9		
H4C56S02095G-.75G	8	H6C14S05991G-2G	13	H6C21S02020G-7.5G	9		
H4C56S02095G-1G	9	H6C14S07330G-1.5G	13	H6C21S02555G-7.5G	11		
H4C56S02653G-.5G	10	H6C14S07330G-2G	13	H6C56S12641G-.5G	12		
H4C56S02653G-.75G	10	H6C18S00422G-3G	7	H6C56S12641G-.75G	12		
H4C56S02653G-1G	11	H6C18S00422G-5G	7	H6C56S12641G-1G	13		
H4C56S02874G-.5G	10	H6C18S01140G-3G	9	H8C14S07488G-1.5G	13		
H4C56S02874G-.75G	10	H6C18S01140G-5G	9	H8C14S07488G-2G	13		
H4C56S02874G-1G	11	H6C18S01359G-3G	9	H8C18S02685G-3G	11		
H4C56S03177G-.5G	10	H6C18S01359G-5G	9	H8C18S02685G-5G	11		
H4C56S03177G-.75G	10	H6C18S01474G-3G	9	H8C18S03132G-3G	11		
H4C56S03177G-1G	11	H6C18S01474G-5G	9	H8C18S03132G-5G	11		
H4C56S03706G-.5G	10	H6C18S01645G-3G	9	H8C18S03727G-3G	11		
H4C56S03706G-.75G	10	H6C18S01645G-5G	9	H8C18S03727G-5G	11		
H4C56S03706G-1G	11	H6C18S02020G-3G	9	H8C18S04119G-3G	13		

# NOTES

---



ILH

RHB

Motor Information

Part Number Index



Conmutador: +52(55) 5305-1320  
Fax: +52(55) 5305-1326  
Nextel ID: 52\*40085\*2  
Lada sin Costo México: 01800 552 9428  
mail: [ventas@rodamientos-samper.com.mx](mailto:ventas@rodamientos-samper.com.mx)

